

**High Capacity Screen Shaker  
SV015**

Impact Test Equipment Ltd  
[www.impact-test.co.uk](http://www.impact-test.co.uk) & [www.impact-test.com](http://www.impact-test.com)

User Guide  
**User Guide**  
**User Guide**

**Impact Test Equipment Ltd.  
Building 21 Stevenston Ind. Est.  
Stevenston  
Ayrshire  
KA20 3LR**

T: 01294 602626

F: 01294 461168

E: [sales@impact-test.co.uk](mailto:sales@impact-test.co.uk)

Test Equipment Web Site

[www.impact-test.co.uk](http://www.impact-test.co.uk)

Test Sieves & Accessories Web Site

[www.impact-test.com](http://www.impact-test.com)

## Connection

Connect the machine to the electricity supply, 220V 50Hz 1ph. The motor power is 750 Watt.



## Loading

The first screen can take up to of 30kg of material. In order to insert all the screens in their proper places, rotate the bars “A” counter-clockwise. After inserting the screens, rotate the bars clockwise again to hold the sieves in place.

## Operation

Move the main switch “D” from position “0” to position “1” and push the green button “E” (see figure 2).

At the end of a test cycle, push the red button “F”, and return the main switch to the “0” position.

## Maintenance

The High Capacity Screen Shaker requires simple periodic maintenance. All the parts that are subject to wear are equipped with connectors for lubrication. The bars are protected by the rubber cowlings, which must be replaced when they start to wear.

Periodically check the tension of belt “B” and replace if becomes too loose.

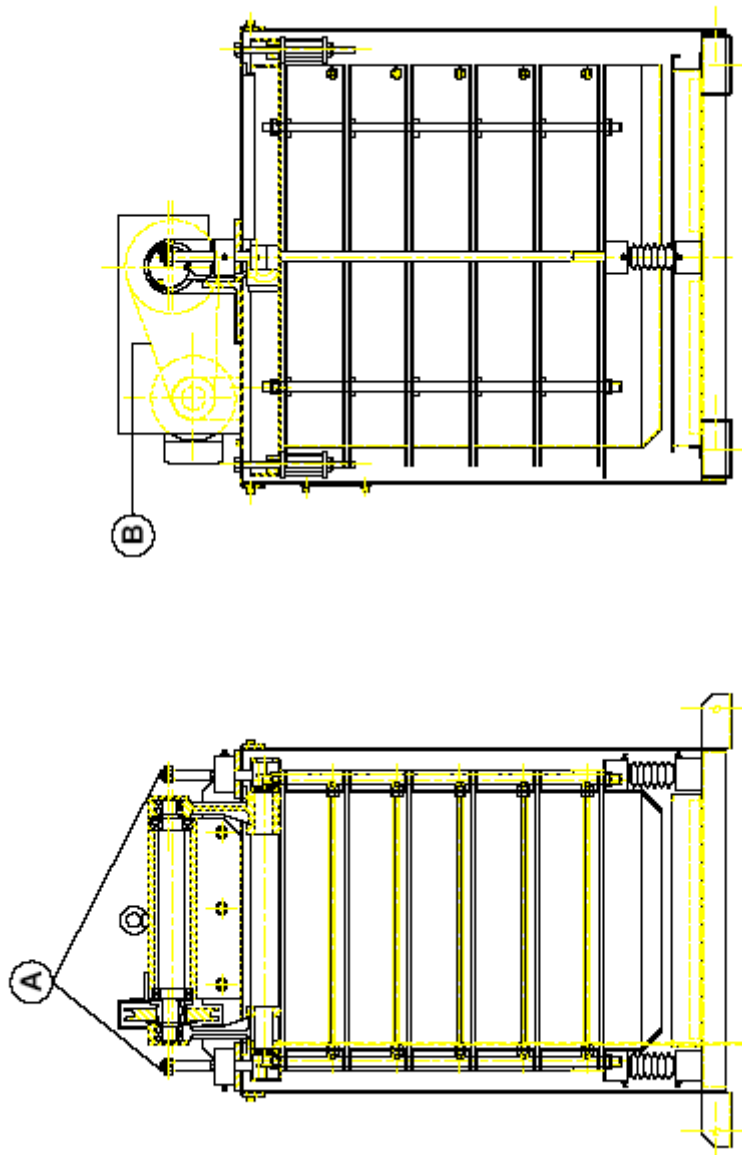


Figure 1

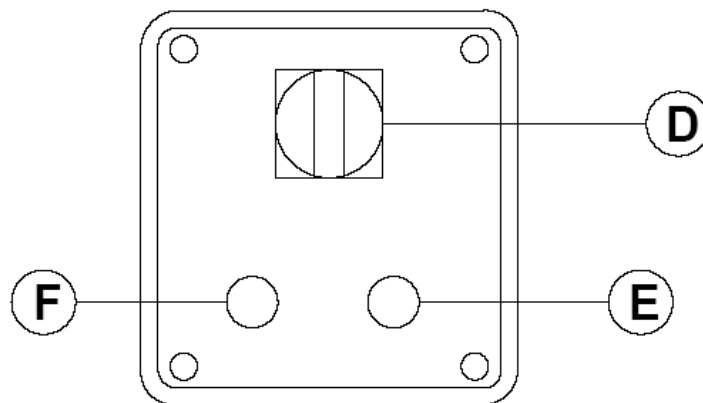


Figure 2